

FINGAL FLYER

Summer 2017



Celebrating life on the Fingal
Peninsula.

“Keep Fingal Special”



Fingal Head Community Assoc.

**Inc. wishes residents and
visitors to Fingal a Merry
Christmas and a happy, healthy
and prosperous New Year.**



please swim between the
RED & YELLOW
FLAGS

Bird Notes: Laughing Lessons

We're Grandparents! The kookaburra chicks have fledged and are hanging around with the adult flock and attending laughing lessons. The youngster makes a noise similar to the 'feed me' noise, it used to make while in the nest demanding food. There are usually two adults in attendance, one of whom will make their laughing call quietly (for a kookaburra). The young copies but he is not good at the noise yet – I can make a better kookaburra call! The whole process is quite entertaining!

There is a dominant pair of kookaburras with permanent bond and their group includes offspring from up to four years ago. We estimated that six adults took turns to incubate the eggs and feed the young. They were incubating the eggs in September and the chicks fledged late November. There were 3 chicks in the nest and I've seen 2 fledglings.

The newly fledged ones are identifiable by the squarking noise they make and their somewhat ungainly flight. They are nearly the size of the adults – just their tail feathers are a little shorter. The whole flock has done a magnificent job of feeding the chicks and they have grown very quickly. The six adult kookaburras brought a continuous supply of food; lizards, crabs, worms, small snakes, stick insects and grubs to the nest which was a tunnel in a termites nest in a dead banksia.

Local photographer Tony Cadell spent many hours near the nest getting wonderful photos.



Kate McKenzie, 6 December 2017

Aircraft Noise Campaign and Airport Developments

Impact of the Master Plan approval

On 15 July 2017 the Minister approved the GCA Master Plan 2017. The Master Plan includes growth in annual passenger movements forecast to grow to 16.6 million in 2037, at an average annual growth rate of five per cent. Of this, 13.6 million domestic passengers will travel through GCA, accompanied by 1.36 million short-haul international passengers and 1.7 million long-haul international passengers.

What will this mean for Fingal Head? More International and northern bound flights from Low Cost Carriers – which will increase aircraft noise. Despite advice that newer aircraft (A330) are less noisy one only needs to be disturbed by the late night Air Asia X flight to realise that despite the age of the aircraft, a full passenger and fuel load shortly after take-off together with a left hand turn over Fingal Head means that the noise is amplified. While a curfew exists for flights up until 11pm the fact that the Gold Coast Airport operates on Queensland time means that those in NSW receive no benefit from the night time curfew during Daylight Saving months.

If you are concerned about aircraft noise or related issues when aircraft are flying over Fingal Head the Airservices Australia website - <http://www.airservicesaustralia.com/aircraftnoise/> provides a range of information.

WebTrak - <http://www.airservicesaustralia.com/aircraftnoise/webtrak/> - is a tool that enables the community to see where aircraft fly and explore historical trends and patterns. WebTrak is provided by [Bruel & Kjaer](#).

WebTrak uses information from air traffic control secondary surveillance radars to display aircraft movements:

- within 50 kilometres of the airport
- up to 30 000 feet above mean sea level

Aircraft noise data is also displayed collected daily from noise monitors strategically located around communities close to the airport.

HOW TO MAKE A COMPLAINT

You can lodge a complaint, comment, feedback or make an enquiry by:

- using the [online form](#). To access the online complaint form from a hand-held device (for example, a smart phone), hold down on the link and select the option to open the form in a new page
- using [WebTrak](#)
- telephoning 1800 802 584 (freecall). The phone service is staffed Monday to Friday, excluding public holidays, from 9 am-5 pm Sydney time
- post to: Noise Complaints and Information Service, PO Box 211, Mascot NSW 1460

If you call our phone service and all our Complaint Specialists are busy, you can choose to leave a voicemail message.

Due to the holiday period the Noise Complaints and Information Service will be closed from Friday 22 December 2017 until Monday 8 January 2018. Complaints and enquiries can still be registered with Airservices Australia via the website.

Contamination concerns widen

Following an article published in the *Echonetdaily* on 1 November 2017 residents' concerns have been broadened. The article is reproduced in part for your information.

"Gold Coast Airport pollution 'could have spread 20km' - Chris Dobney

Tweed District Residents & Ratepayers Association president Lindy Smith has accused Gold Coast Airport management and Airservices Australia of 'deliberately obfuscating' over pollution from toxic firefighting foam that has leached into surface and groundwater around the airport and which, she says, may have spread as far as 20 kilometres.

The firefighters' union yesterday called on the government to provide mandatory testing of all aviation firefighters who have worked at the site for the highly toxic of Polyfluoroalkyl substances (PFAS) but Ms Smith said the problem goes much deeper, and could potentially affect residents in NSW as well as Queensland.

'Both the Airport and Airservices Australia have known since 2008 that the groundwater was contaminated. In 2011 they had confirmation that Coolangatta Creek, which runs through the airport, was also contaminated – and yet they proceeded with two developments that included substantial clearing and massive earthworks and disturbance of soils, surface and groundwater,' she told *Echonetdaily*.

'Through the entire process of the Instrument Landing System development they never disclosed that there was groundwater contamination or that Coolangatta Creek was contaminated.

'It brings into really serious question the withholding of that information because that has prevented proper and adequate consideration, not only by the community, but by local and state authorities in the public exhibition process,' Ms Smith said.

Bore water affected

She added that two weeks ago, data released by Airservices showed Bilinga and Tugun residential areas to the east of the airport contain contaminated groundwater. 'It is above drinking water levels – and those communities have used that water for many decades,' she said.

'It borders on contempt that it has taken from 2008 until the week before last for results of sampling to have been released for that residential area when it's known that residents use the bore water.

'We certainly know from other sites that it has spread extensively. At Oakey Airport I think it's in the range of 20-odd kilometres and that's the situation at Williamstown Airport as well,' she said.

Airport's 'conflict of interest'

Yesterday, the United Firefighters Union called on Airservices Australia to offer full blood tests to check for levels of PFAS, which is linked to cancers and other health impacts and has been widely used at airports across Australia for decades.

'Aviation firefighters, past and present need mandatory blood testing as a matter of urgency. They want to know if their blood is toxic so they can manage their health,' Aviation Branch Secretary Henry Lawrence said.

ABC radio yesterday reported that the airport had told staff who had concerns to 'contact the airport'.

But Ms Smith said the airport's response revealed 'a conflict of interest'.

'The airport is a private company, so the bottom line is about profits, and the huge expansion plans for the airport.

'It's highly inappropriate [that they should be managing the issue] and I'm calling for an independent body to be set up to manage these sites across Australia.'"

The continued developments at the Gold Coast Airport with the disturbance of the contamination remain a significant concern for residents.

Remember that to achieve any improvement in aircraft noise outcomes for our community that Airservices Australia needs to know that you continue to be concerned about the issue. Utilise the complaints processes detailed in this report. Please ensure that the voices of the Tweed community are heard on these important issues.

We will continue our work to improve outcomes on these issues in 2018. Until then have a safe and happy festive season.

Helen Twohill – President, Fingal Head Community Association Inc.

COMMUNITY ACTION

I reported in the last issue that recommendations on the Building Height review Community Conversation workshops would be considered by Council on 5 October 2017. I along with three other members of the FHCA attended the Council meeting where the recommendations were unanimously supported by Tweed Shire Councillors.

The decision provides recommendations for planning based design or regulatory options to address, the immediate concerns surrounding building heights as well as wider concerns for local character and amenity.

These include:

- That the existing 9m building height limit which currently applies to the Fingal Head locality be maintained as this height provides flexibility to design a building on sites which are constrained by flood and sloping sites.
- That the 9m building height limit be further qualified by a restriction of a 2 storey floor limit.
- Enact the above as part of a broader planning proposal to amend LEP 2014 to supplement the maximum height development standard with a maximum storey allocation as they relate to different building typologies. As it would apply to Fingal Head this would include 9m and 2 storey building height standard.

This is a significant achievement for our community. The restriction to a 2 storey floor limit has been a major issue that this community has been seeking to achieve since I took up residence in Fingal Head - 19 years ago!

As we reflect on 2017 we should be proud that we have worked hard to achieve this significant reflection of our commitment to maintain the integrity of the character of the small village, its history and culture. It will help Keep Fingal Special.

Lots more to do in 2018 of course so I thought it an opportune time to invite you to join the Fingal Head Community Association. A resident in my street asked me this week why I had not personally invited him to join the Association. I referred to the notice that appears in each issue of the Fingal Flyer stating FHCA needs you! So if you like him would like a personal invitation – here it is. It helps strengthen our local community if you join the Community Association. If you would like a membership form please e mail me on helen@twohill.com.au.

If you have the time to take an active role in your community there are numerous ways you can support efforts to keep Fingal Special. We are always looking for people with skills to assist in producing the Fingal Flyer which is published four times each year.

As the end of 2017 nears I would like to thank the community for their support through the year, as well as our committee, and the numerous organisations who work with us including Tweed Shire Council and staff.

Please keep safe throughout the festive season and enjoy our special place, beautiful environment and help to keep Fingal special.

Helen Twohill

President - Fingal Head Community Association Inc.

Cane Toads – Where did they come from?

Cane Toads - Where did they come from?

Cane toads were introduced to Australia from South America in 1935 to control beetle pests in Queensland cane fields. 101 cane toads were released from Gordonvale in Queensland. They were introduced to Northern Rivers cane fields in the 1960s after they proved to have high survival rates however they were unsuccessful in controlling the cane beetles. Recent studies show that toads are accelerating – from 10 km per year in the early years, through to 50 km per year today. They are now prolific throughout the Northern Rivers.

What is the problem?

- Toads eat large numbers of native animals, especially insects and other invertebrates and occasionally frogs, small birds and mammals.
- Toads are prolific breeders - each female can lay more than 30,000 eggs at a time. two times a year, Tadpoles hatch within 24-72hrs and live for about 5yrs • Toads out compete with native species for homes and food resources - Native skinks and frogs just can't compete with cane toads
- Cane toads are poisonous at all stages of their life cycle. They are poisonous to pets, humans and native animals including goannas, snakes, quolls and dogs. Toxin is produced in their shoulder glands and is present in the skin of the back.
- Cane Toads may transmit diseases to native snakes, frogs and fishes
- Cane Toads have no specific predators and can increase rapidly and move into new areas quickly.

How can we stop them?

The CSIRO have researched many ways to stop the cane toad but have so far been unsuccessful. Due to the vast scale of the cane toad infestation and there not being a broad-scale biological solution, total eradication is not practicable. The best solutions to date are local cane toad control programs to decrease the impact of toads and stop their spread.

What can we do locally in Fingal?

There are a few ways that we can help to manage the impacts of Cane Toads in Fingal. By keeping our local population of Cane Toads under control, we can help to protect our local native fauna. Ways to help manage Cane Toads locally include:

- Toad proofing (fencing) ponds around water bodies to stop access to known breeding sites.

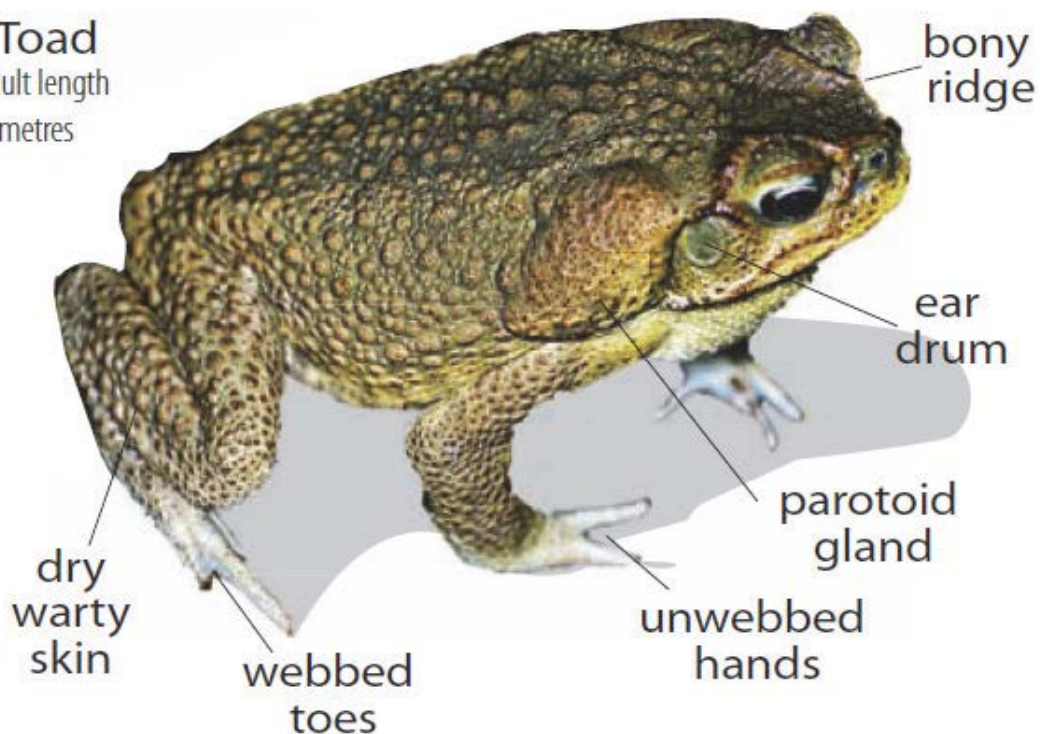
- Filling in or emptying large potholes during the wet season, as toads are known to breed in long-standing potholes.
- Growing longer lawns and planting native gardens –toads prefer short lawns where they can move and hunt easily
- Learn how to identify toads correctly and then catch toads and collect toad eggs on your own property.
- Create and participate in a local toad muster group.
- Keep pet food and water bowls out of reach of cane toads.(at least at least 60cm high)
- Keep food scraps out of reach of cane toads.
- Turn off outside lights when not in use as toads gather under lamps to eat insects attracted to the light.
- Map cane toads sightings on Toadscan. <http://www.feralscan.org.au/toadscan/>

Take care when handling Toads!

If handling cane toads, take care not to come in contact with their poison. Venom exudes from the parotoid glands above the shoulders and toads have been reported to spray venom a short distance if the gland is put under pressure. Always use rubber gloves when picking them up, and wash your hands carefully afterwards.



Cane Toad
Average adult length
is 150 millimetres



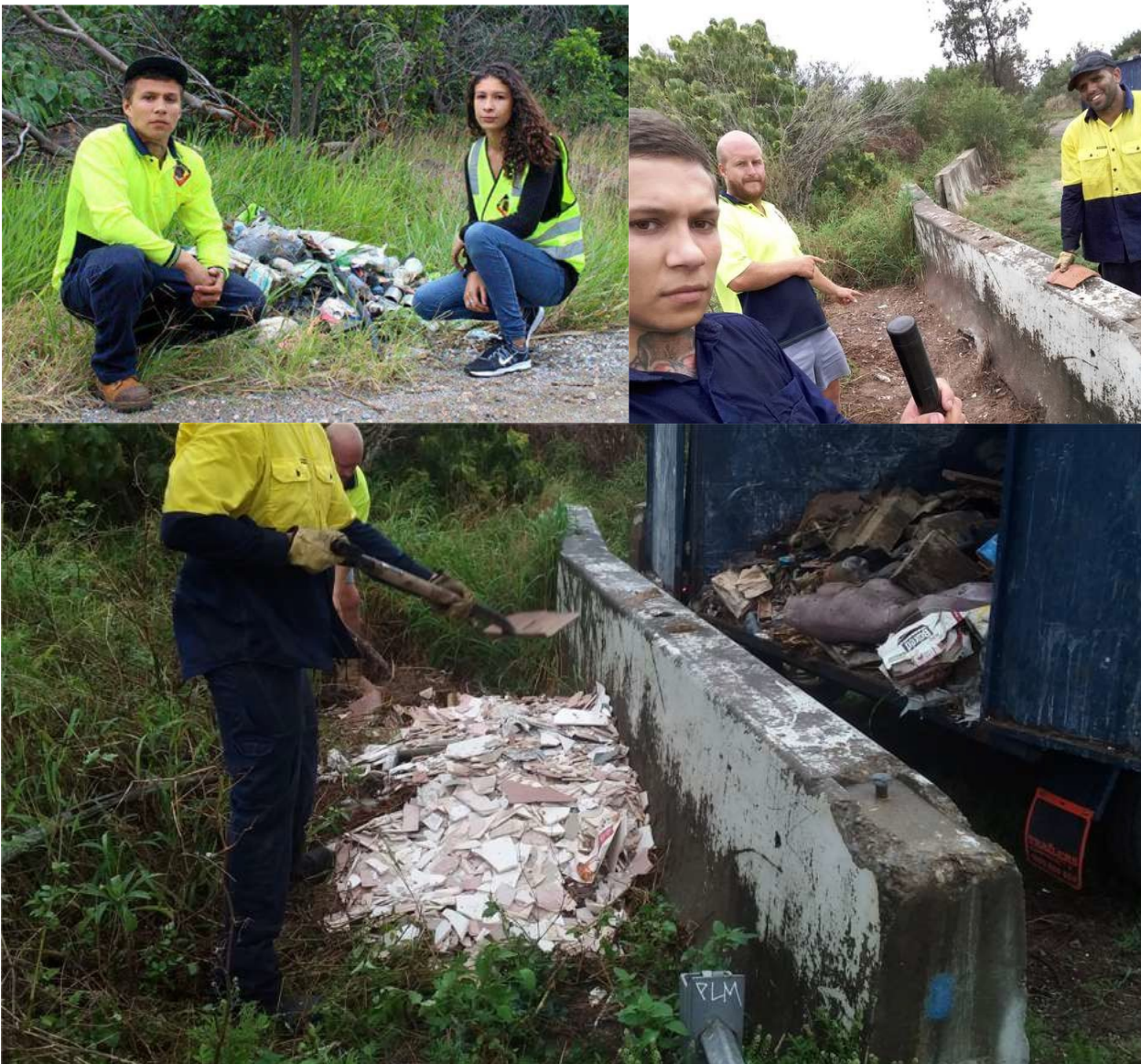
Aboriginal Land Clean Up

The TBLALC has undergone a large scale clean up on Letitia Road, Fingal Head, in October 2017. The Aboriginal Land Clean Up Prevention (ALCUP) Project has proven to be very successful, as we removed more than 1.5 Tonnes of waste and disposed the waste at the appropriate recycling facility.

Although illegal dumping is still an issue, the TBLALC is taking all the correct steps to prevent this from being a further problem in the future.

Illegal off road access is causing further damage to the local ecosystem; 4WD's still manage to make their way off road and run down plants and trees to make new tracks, destroying the flora and fauna that call that area home.

Saving and restoring Tweed Byron LALC's land at Letitia Spit is one of our main priorities as part of the ALCUP Project. We share the same goal with many locals and local associations; we would like to keep Fingal Head special.





Our concrete barriers and gates unfortunately have proven to be a small obstacle to larger 4WD's.



People are going to extreme lengths to illegally access off road tracks.



COOKING WITH JO

EASY CHRISTMAS HAM

INGREDIENTS

- 1 x leg of ham
- 1 orange
- 10 x cloves
- 3 star anise
- 1 x 3cm piece of ginger
- 1 large oven bag

METHOD

Take ham out of fridge 1 hour before baking so it can take the chill off it

Pre heat oven to 160*. Peel skin off ham. Discard. Score the ham fat diagonally not cutting into the meat.

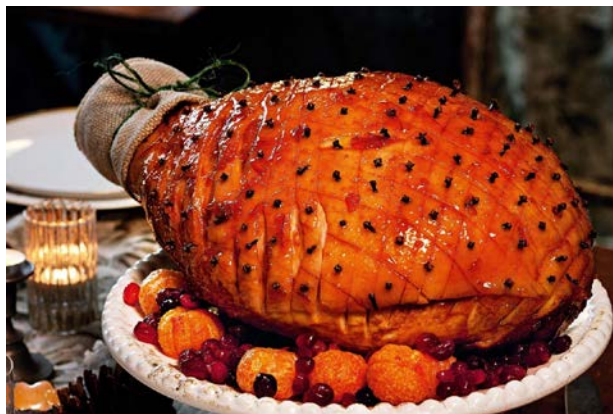
Cut the orange in ½, stud the cloves into the orange with the star anise. Slice the ginger into 1 cm slices, skin on is fine and stud this into the orange.

Place the ham in an oven bag. Place the 2 orange ½ s in the bag sitting up right. Tie the bag up place in a baking dish and bake in oven for 1 ½ - 2 hours depending on size of ham.

Carefully remove from oven. Turn oven to 180*. Allow to sit 10 mins then cut the top of the oven bag, be carefully as steam will escape. You can brush your ham with some orange marmalade, or maple syrup and put back in oven for 30 mins to brown up.

I like to mix 1 can of ginger ale, ½ cup orange juice and ½ cup brown sugar, place in a pot and stir carefully for 5 to 10 mins till sugar is dissolved and sauce becomes a little sticky. You can put this over ham then back in oven or use it as a sauce for the ham once sliced.

I like the oven bag as all the flavours are trapped in and you are not picking the cloves out of the ham itself. You can have the ham in the bag ready the day before, keep refrigerated.



Quick and easy fruit mince pies

- 2 packets of small vol-au-vents
- 1 jar fruit mince
- Icing sugar



Preheat oven to 170*. Place vol-au-vents on a tray lined with bake paper. Spoon fruit mince in each one. Bake in oven 10-15 mins till vol-au-vents become a little brown. Remove, allow to sit for 10 mins, dust with some sifted icing sugar and enjoy. These are great if you're short on time or need to take a plate of nibbles to friends.

Merry Xmas and a safe holiday

FINGAL HEAD COASTCARE NEWS

NSW Landcare Award. Our biggest news for this edition. On October 26, Fingal Head Coastcare were named NSW Landcare Champions in the 2017 Sure Gro Coastcare Award. We are particularly pleased to have our achievements recognised by NSW Landcare as they are the recognised authority on Landcare in NSW.



Pictured left: Kay Bolton, Heidi Fletcher & Kate McKenzie.

St. Josephs School

Fingal Head Coastcare was the focus for Year 12 Geography Field Trip and Grade 1 enjoyed a morning of activities sowing seeds, planting, identifying birds and plants with Coastcare and learning about bush tucker and with Franc Krasna.



Graffiti Off Day

On Sunday October 29 - the official NSW Graffiti Removal Day FHC was joined by TBLALC and Tweed Valley Sailing Club to remove graffiti in our area. The day was a great success. Two of our members keep a very watchful eye on graffiti around Fingal Head and remove it as soon

as it appears. We would be very pleased to have help from others who find graffiti as offensive as we do.

The Holiday Season has arrived. The majority of our visitors respect the area but if you see inappropriate or damaging activities please report them to the relevant authorities. A list of relevant phone numbers is included in this Flyer.

Pandanus Under Threat

More than 200 Pandanus on Fingal Head Beach, the headland and Dreamtime Beach have been injected by Tweed Shire Council entomologists. These are infected with the Pandanus Leaf Hopper - *Jamella australiae*. The Jamella leaf hopper was introduced to the north coast when some infected Pandanus were brought in from north Queensland for the Casuarina development and it has spread from there. If left uncontrolled it can kill the Pandanus and many of our Pandanus has succumbed and died. If you notice Pandanus yellowing off, check the underside of the leaf for the hopper or eggs and report this infestation to Tweed Shire Council. The eggs are illustrated here. You can read more on <http://tweed.nsw.gov.au/Item/927>.



Fingal Head Coastcare wish you as always, a safe, happy and fire free holiday season.

Kay Bolton

Fingal Head Coastcare

Helping to Keep Fingal Special



Remember the FLAGS and stay safe on Fingal Beach this summer!

- F** – Find the flags and swim between them
- L** – Look at the safety signs
- A** – Ask a lifesaver for advice
- G** – Get a friend to swim with you
- S** – Stick your hand up for HELP!

TURTLES

Did you know the Tweed Coast is a popular playground and destination for Sea Turtles? The two types of turtles seen are the Green Turtles and the Logger Head turtles. Our precious coast is facing so much pressure - a booming population, coastal development, and increased boating and fishing. Green Turtles are now listed as Vulnerable and Logger Head turtles are listed as Endangered so they need your help.

They are amazing creatures with an impressive fact file!

- Marine turtles have nested on parts of Queensland's and NSW's coast for thousands of years
- Depending on the species, marine turtles can take anywhere between 8–50 years to reach breeding age.
- It takes a female green turtle 30-40 years to reach maturity before she can lay eggs
- Due to the range of threats, at their different life stages, it is thought that only 1 in 1000 hatchlings will survive to adulthood and then return to the beach to nest.
- Green turtles that nest on the Australian coast migrate from numerous feeding grounds dispersed through Indonesia, Papua New Guinea, Solomon Islands, Vanuatu, Fiji and New Caledonia as well as from Queensland, Northern Territory and Western Australia.
- They make long migrations between feeding grounds and nesting beaches. Migrations recorded from nesting beaches in the southern Great Barrier Reef have exceeded 2600 km but the average migration is about 400 km.
- The Green Turtles are Carnivorous when young but as adults they feed only on marine plant material like seaweeds, seagrasses and mangrove fruits
- Loggerhead turtles are carnivorous, feeding mostly on shellfish, crabs, sea urchins and jellyfish. They appear to forage in deeper water (Cogger 1994).
- Breeding seasons coincide with warmer weather particularly round Dec, Jan Feb, March
- Green turtles eggs have an incubation period of about 2 months
- Green turtles, being ocean-dwelling species, spend most of their life at sea and forage in open water, reef lagoons and estuaries
- The eggs are laid at night and the female turtle then returns to the sea. Each nesting season she returns to the beach to nest an average of five times at fortnightly intervals.
- In general, female green turtles lay about 115 round, ping-pong ball sized, parchment-shelled eggs, per clutch.
- Each nesting season the female turtle will return to the beach to nest an average of five times at fortnightly intervals.
- Eggs are laid in holes dug into the fore dunes on beaches throughout their range with scattered nesting records along the NSW coast.

www.ehp.qld.gov.au and <http://www.environment.nsw.gov.au>

For more information follow this great link for the 30 page colour [Queensland Marine Turtle Field Guide](https://www.ehp.qld.gov.au/wildlife/pdf/marine-turtle-field-guide.pdf) (PDF, 5.0M) <https://www.ehp.qld.gov.au/wildlife/pdf/marine-turtle-field-guide.pdf>

How can you help this species?

People's activities have had a substantial impact on all turtle species. Some simple things can ensure the future of this species.

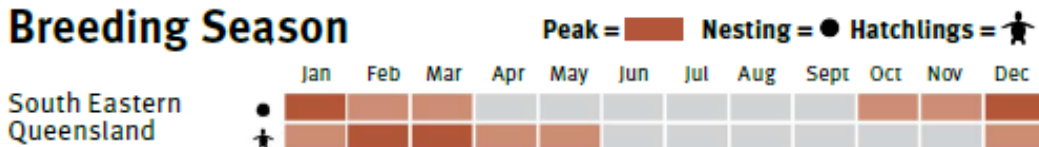
- **Pick up your rubbish and any you see on the shore**- Remember that rubbish you throw away can find its way to the sea. Plastic and other marine debris that is swallowed by mistake as jellyfish can cause blockages of the stomach and intestines, suffocation and infection of marine animals such as turtles.
- **Fish responsibly** including recovering lines, hooks and nets at every opportunity. Accidental entanglement in shark nets, traps, longlines and other fishing gear kill turtles. Discarded fishing gear such as lines, nets and ropes can cause drowning, starvation and wounding (ingested fish hooks), all of which can lead to infections, amputation of limbs and death.
- **Use turtle-friendly crab-pots** [eg small trap opening], minimise rope, floats and weights to prevent entanglement, check your crab pot frequently and avoid setting traps in turtle hot spots. Green turtles can drown after becoming entangled in commercial and recreational crab pots and their float lines. Trap types that cause an impact include round crab pots, collapsible pots, and spanner crab traps.
- **Keep your dog on a lead at the beach and cats inside** at night to prevent them eating the eggs of turtles and disturbing nest sites.
- **Decrease your boat speed** in estuaries, sandy straights and shallow inshore areas, and remember to 'Go Slow for those Below', Collision with boats and other marine traffic are often death sentences.
- **Drive slowly on beaches and away from any known nests** Drive on the wet sand below the high tide mark to avoid making wheel ruts. Vehicles can squash turtle nests or form tyre ruts that trap hatchlings.
- **Report injured/trapped turtles to Tweed Valley Wildlife 24 hour Hotline - 02 6672 4789**
<http://www.tvwc.org.au/> Visit <http://seabirdrescue.org/sea-turtles> and <http://seabirdrescue.org>
- Report turtle nests and disturbed turtle nests to **NPWS**

Did you know that light pollution is a threat to turtles?

Lights from coastal development results in changed light horizons, which causes increased mortality of hatchlings when they move towards stronger light sources inland instead of the low horizon out at sea. There is also a decline in the recruitment of new adults to nesting populations on lit beaches as they avoid brightly illuminated beaches. **At night, minimise lights on the beach, including campfires.**

LOGGER HEAD TURTLES

Breeding Season



Adult loggerhead turtle. Photo: Col Limpus EHP

GREEN TURTLES



Green turtle hatchling. Photo: EHP



Green Turtle *Chelonia mydas*

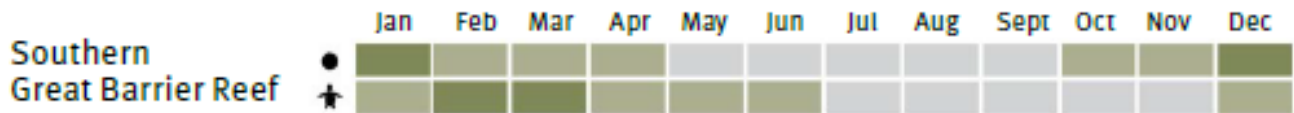


<http://www.environment.nsw.gov.au>

The Green Turtle is a large sea-turtle that grows up to 1 m in length. Its heart-shaped shell is olive-green, brown and black, and the scales on the side of the face and limbs have distinctive pale edges.

Breeding Season

Peak = ■ Nesting = ● Hatchlings = 🚶



Turtle Watch

Hi to all turtle watchers.

Our first sighting for this year. Milly Lomas spotted a large turtle on the edge of the water in front of the caravan park during the storm on the evening of Tuesday December 5. No tracks on the beach were obvious – maybe the turtle was just checking the area or maybe scared off by the storm.

Please keep your eye out for tracks (or better still a laying mother) as we are well into laying season. Please report any sightings to Kate McKenzie on

katemckenzie95@gmail.com as we are hoping for a more successful hatching this year.

Turtle tracks are obvious and look like this.



Turtle tracks and Mumma Turtle on Dreamtime Beach 2011.

WHAT'S HAPPENING AT FINGAL SCHOOL?

Roll Up Roll Up...The Circus is In Town!



The students of Fingal School shone at the recent Small Schools Stewart House concert, held at Murwillumbah Civic Centre. Their item entitled "Cirque du Fingale" featured all of the students performing to a range of circus music. Featuring many favourites of the circus, the item included acrobats, strongmen, clowns, stilt walkers and even a lion tamer & lion! The item was recognised by all as an outstanding performance that highlighted the amazing and diverse talents of the students of Fingal School.



SPORTING NEWS

A wonderful variety of sporting opportunities have been offered to our students this year. Our students have participated in basketball, intensive swimming, spaghetti circus and horse riding, just to mention a few. The students are able to develop their skills and confidence in a supported setting, thanks to the Sporting Schools Program, which provides funds to the school to pay for qualified and experienced coaches.

A highlight of our sporting year has been the Term 4 lawn bowls program, organised and supported by Miss Belbin and the wonderful ladies at Kingscliff Bowls Club.

We have much to look forward to next year, with Fustal coaching for the senior students and intensive swimming for the juniors already lined up for term 1.

FAREWELL KATIE

It is with much sadness that we farewell our P&C President, Katie Clark, after many years loyally serving the Fingal Head PS community. Katie will be remembered as a strong advocate for Fingal School who worked tirelessly to make the school a better place for the students and staff alike. We wish Katie well as her youngest child, Hester moves to high school. She will be sorely missed here at Fingal School.

P&C VALUES AWARD

Each year the Fingal School P&C recognises individuals who make an outstanding contribution to the school, the students and the community in upholding the values held dear to FHPS. This year two nominations for this prestigious award were received. Mary Slabb was recognised for her outstanding contribution to the school and community. She gives her time so generously to provide a scripture program for our students and supports the school in many other ways (not to mention the sensational cupcakes!).

The second nominee and winner of this year's award is Celia Wise. Celia has been volunteering her time at Fingal School for many years now. She is the quintessential 'quiet achiever' coming to the school each week to devote her time to supporting students in our classrooms, without ever seeking acknowledgement or recognition, just a genuine desire to assist and support student learning.

We thank and acknowledge both nominees for their outstanding contribution to our school and congratulate Celia on winning this award.

ENROLMENTS 2018

We are currently accepting enrolments for 2018, with vacancies in all grades. For enquiries during the school holidays, please call Christine Marshall (Principal) on 0432 112 362 or email christine.n.marshall@det.nsw.edu.au.

Phasogales – Our little known native

Last week, I received a wildlife rescue call-out to a home on Queen Street in Fingal Head.

In a brief, late night, carpark encounter, the rescuer handed me the little creature inside a warm, woollen sock which I immediately placed in my rescue basket to take home. I made the assumption that I now had a little sugar glider in my care. Hannah described to me a family of these little creatures that lived in the trees outside her house and how they would actively hop, or glide, from branch to branch throughout the night.

I thanked her and promised I would stay in touch.

At home I prepared a warm formula for the little glide, then sat down on the couch to assess and feed him.

To my surprise I retrieved from the sock a...phasogale!

I would be lying if I told you that I could identify him this quickly. In fact I had no idea what the little creature in my hands was a first glance!



My husband and I had to google this poor little guy while he patiently waited for some tucker. Once we had confirmed his ID and I had spoken to our group marsupial expert –we offered him the correct food – and without any hesitation he gratefully accepted.

I kept my promise and got back in touch with Hannah, who had rescued the Phasogale, and was able to tell her a little bit more about this little known carnivorous native!

How exciting to know that we have a healthy little family of these fascinating creatures living right here in Fingal Head. Just another reason to Keep Fingal Special and protect our native species.

For Wildlife Rescues in Fingal Head, call Tweed Valley Wildlife Carers on 02 6672 4789.

Thanks to Hannah for calling Tweed Valley Wildlife Carers. The Phasogale is now in care with our marsupial expert and doing well

FACTS ABOUT PHASOGALES

- Phasogales are nocturnal, carnivorous marsupials that live off insects, lizard, spiders and small birds.
- They live in the branches of trees, they may only be 16-27cms in length, but can jump up to 2 metres between branches.
- Brush-Tailed phasogales are listed as a threatened species. Their threats include loss of habitat and predation by foxes and cats.

Sailing Club News



Happy New Sailing Year to all!

The sailing club's annual Bunnings BBQ fundraiser is on **Sunday 7 Jan** – please come down and say hello.

Sunday afternoon Race dates 14 & 21 Jan; 11 & 25 Feb ; 4 & 25 Mar. The **“Chindy Challenge Race” on 4 March** is one to watch – starting at midday at Fingal and heading up the river, under the bridge and past the Chinderah Tavern before turning round to head back to the finish line at Fingal Boat Harbour.

Safety Boat Drivers are still needed for 2 to 3 hours once or twice a month – help out if you can.

Sunday morning **Juniors and Try Sailing** will also be running over the summer – to come along contact Alison Blatcher 0434 982 922 or Bill Fenelon 0411 123 405 or email tvscmail@gmail.com



*Pictured: Max Hennessy
& Taj Krasna*

HELP KEEP FINGAL SPECIAL

Emergencies	000
Tweed Shire Council	02 6670 2400
TSC Rangers	02 6670 2444 AH 1800 818 326
Tweed Wild Life Carers	02 6672 4789
Wild Life Carer Fingal	0416 050 946
Australian Seabird Rescue	02 6686 2852 0428 862 852
NSW National Parks and Wildlife	02 6670 8600
Kingscliff Police	02 6674 9399
Tweed Heads Police	07 5536 0999
Kingscliff Fire Brigade	02 6674 1271
Rural Fire Brigade	02 6672 7888
NSW Maritime Authority	07 5536 1001 AH 0417 8415
Maritime Services	131 256
Illegal Dumping	02 6670 2400 or www.illegaldumping.com.au
Gold Coast Wildlife Hotline	1300 130 372

Thank you...

The Fingal Flyer has been produced by Christine Marshall since the autumn 2016 edition. As Principal of our School, Christine has a very busy job so this additional commitment is greatly appreciated. On behalf of the Fingal Head Community Association Christine thank you so much for ensuring that the Flyer is produced and printed to ensure our community is kept informed.

Thanks are also due to all our contributors and volunteers who assist with distribution.

If you would like to contribute to the Fingal Flyer please forward your contribution to Helen Twohill at helen.twohill@bigpond.com. Or

Please email, text or call Christine Marshall with feedback, ideas and suggestions.

Email Christine.n.marshall@det.nsw.edu.au | Mobile 0432 112 362 | Work 07 5524 2315



- Aircraft Noise
- River Usage
- Environmental Protection
- Community Get Togethers
- Fund Raising

needs you!

Our small community is facing its fair share of large issues.

If you are passionate about this area and wish to preserve the special environment that drew you to Fingal we need your help.

Please become a member or better still become an active member and help

KEEP FINGAL SPECIAL

Contact Heidi info@heidiledwell.com for membership forms